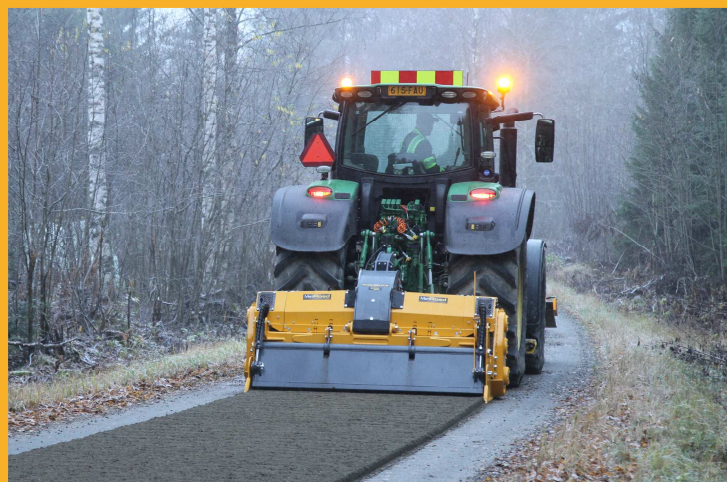


MERIROAD
RC65-221 DTG

For versatile crushing



MERIROAD

MERIROAD

RC65-221 DTG

For versatile crushing

MERIROAD WORKING ENVIRONMENTS

- Crushing the ground before stabilizing,
- Preparing the subsoil for laying sett (car parks, roads, residential areas)
- Recycling of old asphalt and gravel roads.
- Stabilization of grounds down to a depth of 35 cm on all types of roads, with easily accessible materials like cement, polimers, ash, dolomite, lime,
- Construction and redoing of forest roads, communal roads, drives to agricultural areas.
- Building outdoor feed pads
- Stump removal

FEATURES

- Bolt mounted adjustable counter blades
- Hardox liner (frame) bolt mounted
- UNTH Rotor with cost effective carbide cutters
- POC - Pressure operated safety clutch (SUOKONE patented)
- Possibility to turn the direction of the rotor
- Hydraulic front & rear door for material control

OPTIONS

- Hydraulic Top Link
- Slip Alarm 12V
- Rear roller (hydraulic)
- Multiple cutter options available

Base machine demand

Tractor	
Mounting	CAT 3
Auxiliary hydraulic	2-3 pcs. Double acting
PTO	1000 rpm
Working speed	Creep gear recommended

Technical data:

Power range	160 - 400 hp	
Transmission	Mechanical PTO	
Final transmission	Gear (G-serie)	
Clutch	POC-3	
Rotor diameter / width	600 or 650 / 2210mm	24 or 26 / 87 inch
Cutter qty.	96 (UNTH Rotor)	
Working depth	350 mm / 14 inch	

Main dimensions:

Length	1570 / 2580 mm	67 / 101 inch
Width	2660 mm	105 inch
Height	1450 mm	58 inch
Weight	2950 kg	6500 lbs
Weight, with rear roller	3500 kg	7720 lbs

